



# PV-E CRANES

## CRAWLER CRANES



CC80



CC90



CC100



CC135



CC160



CC300

CAUTION: This material is supplied for reference use only. Operator must refer to in-cab Crane Rating Manual and Operator's Manual to determine allowable crane lifting capacities and assembly and operating procedures.

**Complies with EN13000 / ANSI/ASME B30.5**



# Basic Technical details for all PV-E cranes

## Hydraulic system

Bosch Rexroth hydraulic main pump and motors to power all winches installed, crawlers and swing motor. All movements can be done at the same time. All hydraulic filters have electronic sensors which will be displayed in the operator cabin touch screen.

Max working pressure 350 bar

## Crawlers

Powered by Rexroth drive motor and planetary gear reduction unit, electronically controlled for precise movement. Elastomer chain tensioner. The track plates are mounted on a chain drive.

## Turntable gear

Consists of roller bearing with inner teeth, powered by Rexroth swing motor. Accurate swing speed control, free swing and mechanical swing lock.

## Operator Cabin

The air suspended operator seat with integrated joysticks gives the operator maximum comfort.

The joysticks are electric-hydraulic controls that gives the operator very precise performance.



## Winches

The winches are strong in design with powerful performance. The optional free-fall system is built with a low maintenance multi-disc brake system.

### Optional winches

3<sup>rd</sup> winch in boom foot Capacity 5,0 t

Optional with free spooling for piling operation

Tagline winch Capacity 4,0 t

Optional tagline Capacity 7,0 t

Tagline winch is with freefall

## Crane control system

The control of the crane is via CAN-BUS with the PVE developed software and functionality system.

Via a touch screen the operator can oversee all functions and alerts. The Safe Load System is integrated in the touch screen. A 360 degree view camera, including winch camera and load camera ensure maximum safety will working.

**CRANEINFO** is a data storage and crane information system that ensures maximum data availability for optimal dealer or factory support.

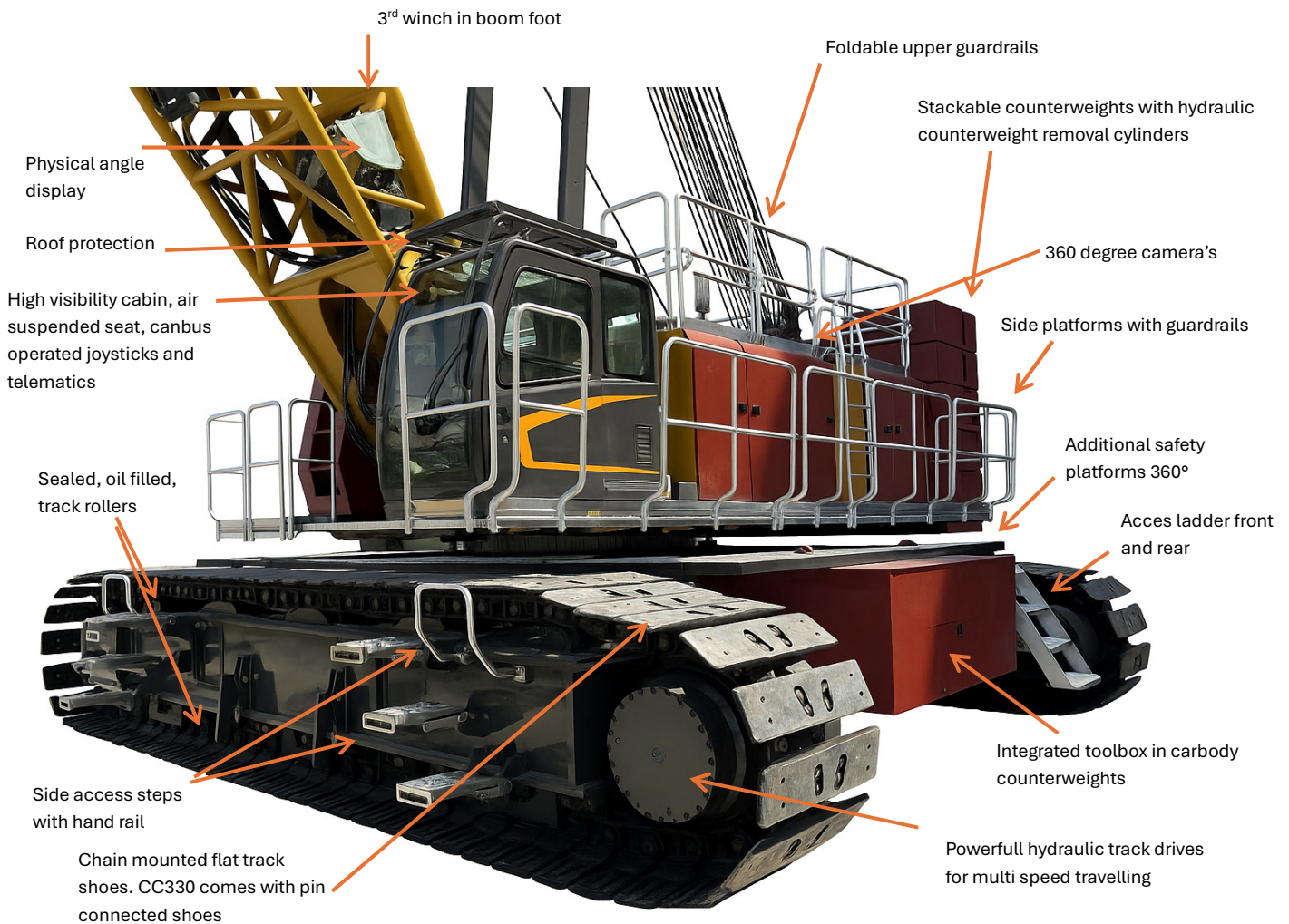




# Standard Features on all **PV-E** crawler cranes

Heavy duty design with high power Cummins diesel engines

The new generation **PV-E** crawler cranes stand out with innovative designs and modern safety systems, improving operational safety, easy controls and optimum performance.



MADE BY CRANE PEOPLE FOR CRANE PEOPLE



## ENGINE OPTIONS AND WINCH SPECIFICATIONS

### PV-E Crane CC90

Engine	Full electric OR Diesel Engine
E- Power rating	350 kW at 2000 rpm, DANA TM4
Diesel Power	261 kW (350 hp) at 2000 rpm
Engine make	Cummins L9
Fuel Tank	500 l with level gauge and low level warning
Emission	ZERO emission or Stage V

Winches		
<b>Hoist Winches</b>		
W1 +W2	Line pull 1 <sup>st</sup> layer	12,5 t
	Line pull 5 <sup>th</sup> layer	9,0 t
	Rope diameter	22 mm
	Rope speed	120 m/min
	Optional	free-fall

### PV-E Crane CC100

Engine	Full Electric OR Diesel Engine
E- Power rating	350 kW at 2000 rpm, DANA TM4
Diesel Power	261 kW at 2000 rpm, Cummins L9
Fuel tank	500 l with level gauge and low level warning
Emission	ZERO emission or Stage V

Winches		
<b>Hoist Winches</b>		
W1 +W2	Line pull 1 <sup>st</sup> layer	18,0 t
	Line pull 5 <sup>th</sup> layer	13,5 t
	Rope diameter	26 mm
	Rope speed	120 m/min
	Optional	free-fall

### PV-E Crane CC160

Engine	Full Electric OR Diesel Engine
E- Power rating	350 kW at 2000 rpm, DANA TM4
Diesel Power	261 kW at 2000 rpm, Cummins L9
Fuel tank	500 l with level gauge and low level warning
Emission	ZERO emission or Stage V

Winches		
<b>Hoist Winches</b>		
W1 +W2	Line pull 1 <sup>st</sup> layer	18,0 t
	Line pull 5 <sup>th</sup> layer	13,5 t
	Rope diameter	26 mm
	Rope speed	120 m/min
	Optional	free-fall

### PV-E Crane CC300

Engine	Full Electric or Diesel Engine
E- Power rating	350 kW at 2000 rpm, DANA TM4
Diesel Power	336 kW at 2000 rpm, Cummins L12
Fuel tank	650 l with level gauge and low level warning
Emission	ZERO emission or Stage V

Winches		
<b>Hoist Winches</b>		
W1 +W2	Line pull 1 <sup>st</sup> layer	25,0 t
	Line pull 5 <sup>th</sup> layer	18,0 t
	Rope diameter	28 mm
	Rope speed	120 m/min
	Optional	free-fall
W1 +W2 (ff)	Line pull 1 <sup>st</sup> layer	18,0 t
	Line pull 5 <sup>th</sup> layer	13,5 t

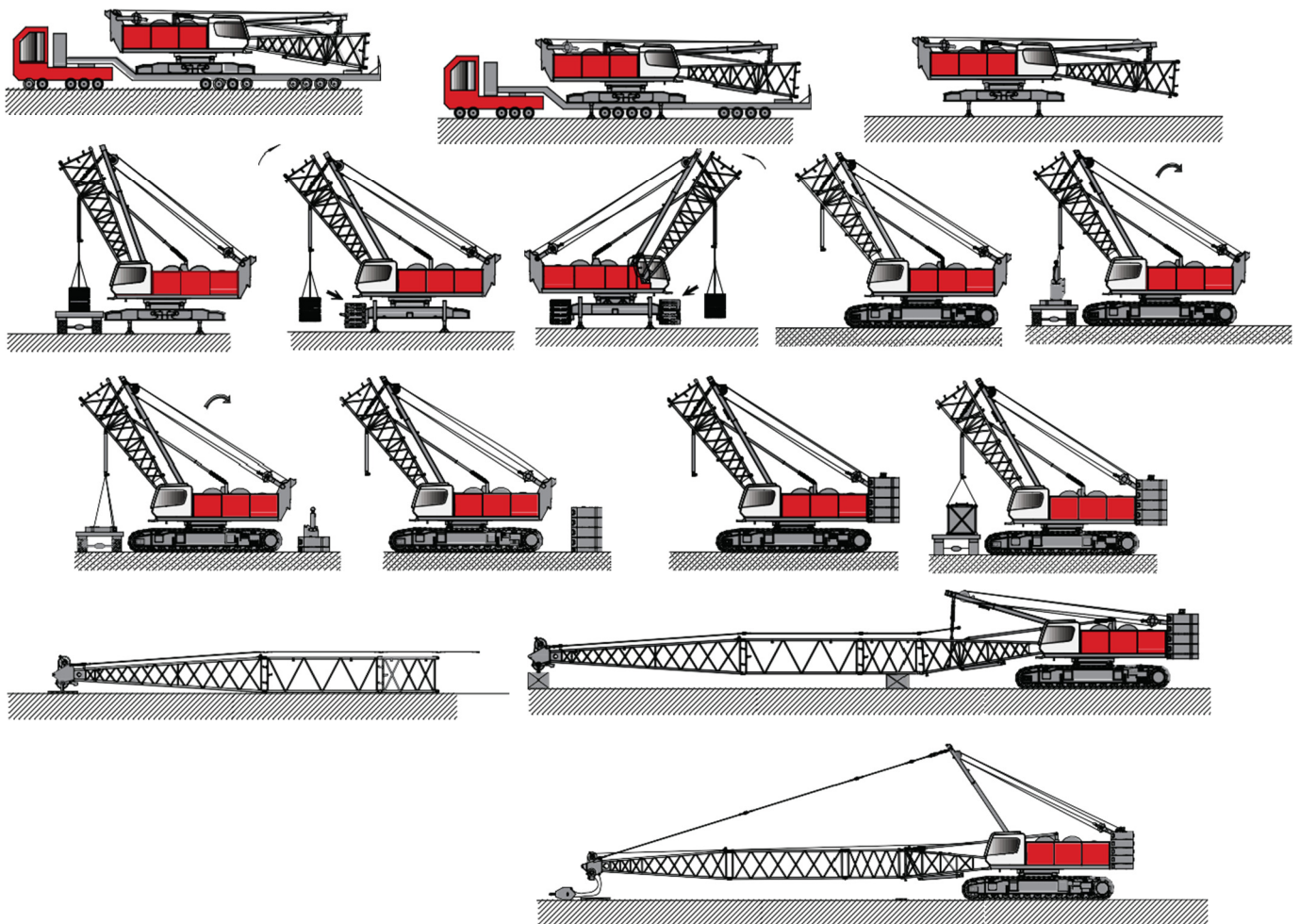


## Attachments for PV-E cranes

• Auxiliary tip extension (runner)	CC90	CC100	CC160	CC300
• Offset jib (fixed jib)	CC90	CC100	CC160	CC300
• Luffing jib		CC100	CC160	CC300
• Heavy duty wind jib				CC300

## Self-assembly for boom, tracks and counterweights

The CC100, CC160 and CC300 all have self assembly for the boom, tracks and counterweights, including carbody counterweights. The CC90 has a self assembly system for boom and the rear- and carbody counterweights.



## Jack Up Cylinder

CC100, CC160 and CC300 all have jack up cylinders as a standard.

Jack Up height is 1320 mm

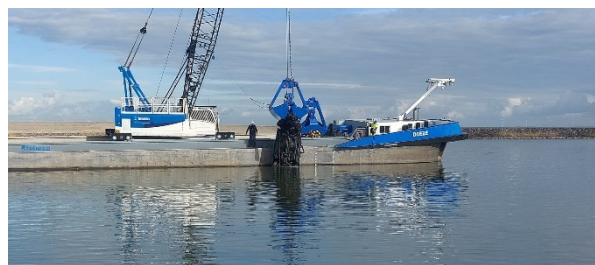


## GRAB operation with **PV-E** crawler cranes

Due to its strong design, high capacity E- Motors or strong Cummins diesel engines in combination with strong winches, all PV-E crawler cranes are very much suitable to be used for grab operations.



With a number of options for tagline winches, with freefall or with constant tensioning systems, you can get the maximum out of your crane investment.



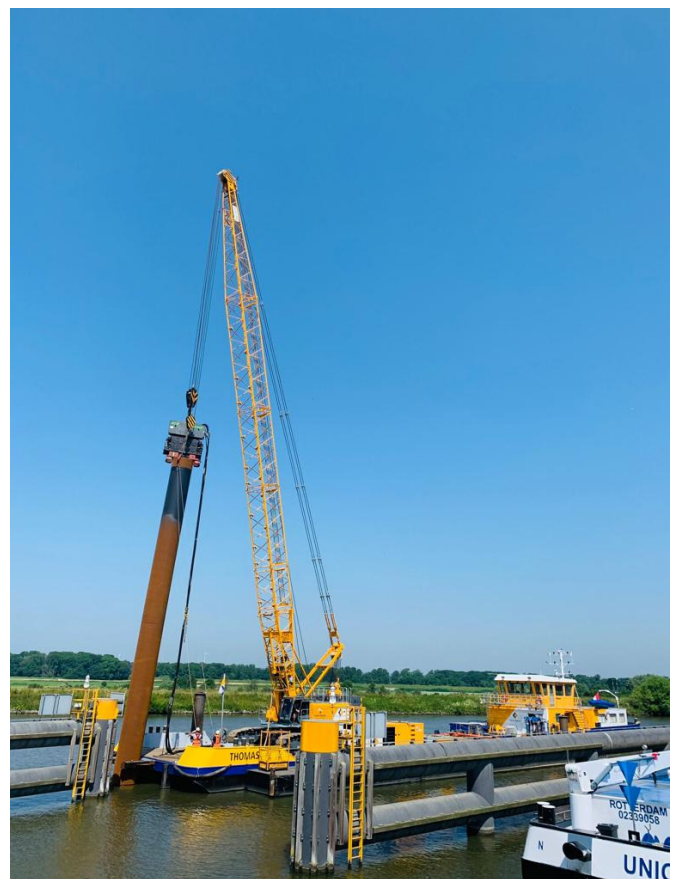


## PILING operation with **PV-E** crawler cranes

With our heritage in Piling expertise, all **PV-E** crawler cranes benefit from this expertise and are thus perfectly suited for use in piling operations.



- Freefall winches
- W3 with free spooling
- W4 for hydraulic hose bundle
- Folding sheave in boom insert
- Pile spotter
- Top view load camera
- Optional extra hydraulics
- Optional bigger engine





# Standard features

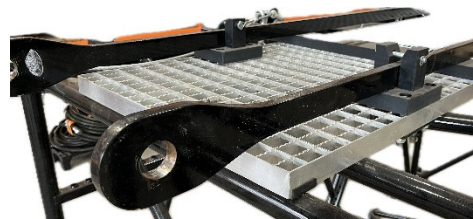
## Boom Stack System

Each boom section is equipped with a heavy duty boom stack system. This integrated boom stack system allows the crane user to stack boom sections without using timber or other materials.



## Boom Pendants

Standard each boom section comes with pendant bars. Boom assembly is more easy and transport of boom sections is made more safe.



## Boom Pin Storage

Each boom section has integrated boom pin storage. This keeps the boom pin safe during transport and Ready for use when connecting the boom sections.



## Integrated Tool Box

Integrated toolbox in the front and rear carbody Counterweight. Lockable with a key.



FOR MORE INFORMATION, CONTACT OUR DEALER:



## PV-E Crane BV

Everdenberg 17, 4902 TT, Oosterhout, The Netherlands

[info@pv-ecrane.com](mailto:info@pv-ecrane.com)

[www.pv-ecrane.com](http://www.pv-ecrane.com)